



Smiles of just a few of our volunteers — thank you to everyone for all you do!

**Volunteer Hours
through
September 2011
6862**

**Spotlight Volunteer—
Carol Bauschke**

Carol has been married for 42 years and has 2 children and twin grandsons. She loves to cook, read and loves to be around people as evident with the way she interacts with our clients. Carol volunteers in the Food Pantry and Senior Delivery and is always looking out for something “special” for her little ladies she delivers to. Carol—making a difference..



**THANK YOU TO KAY ROESER
Coordinator School Supplies**

Every spring MI Lewis starts preparing for Back to School and for the past 9 years, Kay Roeser has been the Chairperson of that Committee to make certain the DISD students have the supplies they need. She makes a trip to the DISD ESC building in search of a list of school supplies that are going to be needed for the coming school year. She then takes that list to Jerry Ziegler and says, what do we do to make this happen (Mr. Z purchases the supplies at discounted prices). Clients of MI Lewis sign up for school supplies starting in July. The first of August, Kay calls her friends (who this year put in over 200 volunteer hours) to put all the supplies together and deliver to the schools to be ready for the first day of school. This year, we distributed school supplies for 655 students.



MI LEWIS WISH LIST

- | | |
|--------------------|----------------------------------|
| Copy Paper | Ramen Noodles |
| Tuna 5 oz. | Boxed dinners |
| Juice | Spaghetti Sauce |
| Jell-O | Dish Soap |
| Mayonnaise | Laundry Soap |
| Mustard | Feminine Hygiene Products |
| Ketchup | Shampoo |
| Crackers | Razors |
| Flour | Toothbrushes |
| Sugar | Toothpaste |
| Pasta sides | Shaving Cream |
| Spaghettios | |

**TOTAL ASSISTANCE
THROUGH AUGUST 2011
\$518,348.38**

SAVE THE DATE

- October 15—Food Fair
- October 24—Stuff the Bus Begins
- November 14— Delivery of Stuff the Bus
- November 19—Food Fair
- November 21– 22 Thanksgiving Baskets
- December 17—Food Fair

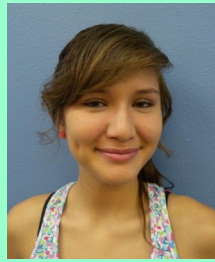
Kroger Neighbor to Neighbor Donation program requires you to “reregister” your card every year, If you will take this newsletter to the Courtesy Booth, they will be able to list MI Lewis as your charity, enabling us to receive a percentage of your purchases. Below is the scan card you will need to take to the Service Counter to register your card. Just another way you can help our cause . Thank you.



**Newsletter
Sponsor**

The Girl Scout Silver Award

The requirements for a Girl Scout Silver Award requires looking around your neighborhood or school and find a way to make a difference. Earning the award puts the scout among an exceptional group of girls who have used their knowledge and leadership skills to make a difference in the world. We would like to introduce you to Elyssa Davila, who has volunteered at the M I Lewis food fair many times over the past few years. Elyssa has chosen M I Lewis as the benefactor of her project because she has seen the enormous support it offers the less fortunate. She



chose her Silver Award project to expand the space used at Food Fair. By increasing the concrete slab and the awning, it would enable the Food Fair to be better equipped to serve the clients. Her goal is to raise and collect enough to extend the patio and extend the awning.



If you would like to help Elyssa with her project, she can be reached at (281) 337-9099.

M I Lewis Social Service Center
P.O. Box 1542
2605 44th Street
Dickinson, Texas 77539

Phone: (281) 534-2043
Fax: (281) 534-1368

Hours: 8:30—1:00
Tuesday—Friday

NON PROFIT ORGANIZATION
U S POSTAGE PAID
DICKINSON, TEXAS
PERMIT NO.10

RETURN SERVICE REQUESTED



M.I. LEWIS
SOCIAL SERVICE CENTER



Volume 2 Number 3

OCTOBER 2011

Executive Director
Betty Pena

Board Members
Mitchell Dale, *President*
Helen Truscott, *VP*
Sharon Edmonds, *Secretary*
Kathy Deats, *Treasurer*
Shamarion Barber
Lorraine Brown
Lonnie Cox
Harriett Engelke
Delia Faust
Ann Newsom
Bruce Pullen
Pete Rygaard
Karen Sutton
Jane Taeuber
Bob Topfer
Jerry Ziegler

Advisory Council
Dr. Susan Andrew
Dennis Cooke
Roderick Cunningham
Zo Curtis
Wyndell Deats
Mike Dienst
Mary Dunbaugh
Virginia Gill
Andrea Greer
Jamie Harbuck
Nelda Harles
Tom Herring
Stephen Holmes
Julie Johnston
William King
Mike Mackey
Julie Masters
Ron Morales
John Reasons
Frank Stansfield
Joe Sullivan
Janet Tombrella
Mark Webster
Leland Williams

The mission of M I Lewis Social Service Center is to render aid to individuals with emergency needs, to make referrals to other agencies for additional support and to encourage its clients toward self sufficiency.

To Donors, Volunteers and Friends,

It has continued to be a busy year and we have had the opportunity to serve a large number of clients since our last newsletter in May. Not only have we worked to assist some of our existing clients to move toward self sufficiency, but also we have helped meet the emergency needs of others. M I Lewis continues to provide financial assistance, food and referrals to other agencies for the clients we serve.

We have had two successful fund raising activities, our annual Wine and Dine Italian Style and the raffle of a new Mustang that we partnered with Habitat for Humanity. We are very appreciative of all of those that supported our fund raising efforts, but there is still much to be done. Please consider a donation to support our ongoing programs and assistance to our deserving clients.

I would like to close with a big THANK YOU to everyone that has contributed your time as a volunteer, your talents in assisting us to provide the programs we do, and your contributions of food and financial resources. Without you, we could not continue to serve those in the surrounding communities who need our support.

Sincerely,
Mitchell Dale
Board President

Remember, you can sign up to receive an electronic copy of the newsletter at www.milewis.org and save printing costs and postage. Also, if you are interested in sponsoring the newsletter, please send an e-mail to betty.pena@milewisctr.org

